

The Wagyu That We serve Today



Thank you for coming to xxxxxx

Please enjoy our premium limited wagyu dish designed by our chef

Ask the staff for wagyu of today

Farm about your Wagyu

The Wagyu that we serve today at Sato Will be From Mizusako Farm

From Kagoshima Japan, Wagyu from Kagoshima was the Champion of 2017

Wagyu Olympic. Please Enjoy the Wagyu that was designed by Eiji Mizusako

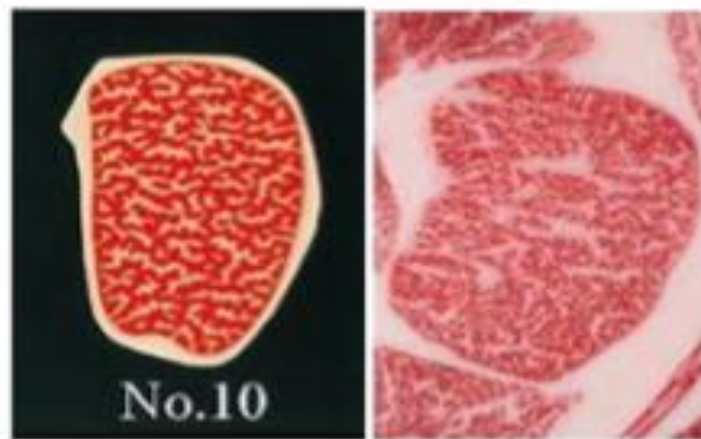


Wagyu Grading of Today's Menu

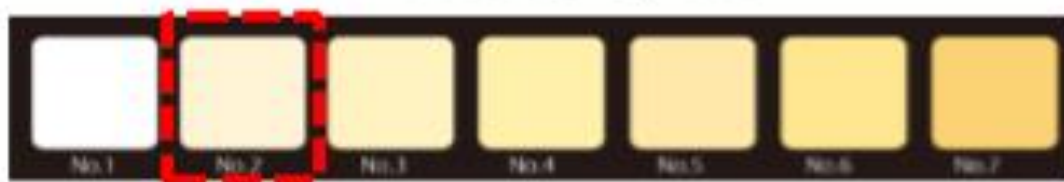
A5 Japanese Black

#1529409817

B.M.S. NO.10



B.F.S. NO.2



B.C.S. NO.4



History of today's Wagyu

<i>Date of Birth</i>	<i>Gender</i>	<i>10digit ID of Mother Wagyu</i>	<i>Breed</i>
<i>Feb,29,2016</i>	<i>Castrated Male</i>	<i>847737800</i>	<i>Japanese Black</i>

<i>Contents</i>	<i>Date</i>	<i>Location</i>		<i>Company or Person</i>
		<i>Prefecture</i>	<i>City</i>	
<i>Birth</i>	<i>Feb,29,2016</i>	<i>Okinawa</i>	<i>Tomigusuku</i>	<i>Ooshiro Yasushi</i>
<i>Move out</i>	<i>Oct,17,2016</i>	<i>Okinawa</i>	<i>Tomigusuku</i>	<i>Ooshiro Yasushi</i>
<i>Transfer</i>	<i>Oct,17,2016</i>	<i>Okinawa</i>	<i>Itoman</i>	<i>Nanbu Live stock market</i>
<i>Transaction</i>	<i>Oct,17,2016</i>	<i>Okinawa</i>	<i>Itoman</i>	<i>Nanbu Live stock market</i>
<i>Move in</i>	<i>Oct,19,2016</i>	<i>Kagoshima</i>	<i>South Satsuma</i>	<i>Mizusako Farm</i>
<i>Transfer</i>	<i>Jun,14,2018</i>	<i>Kagoshima</i>	<i>Akune</i>	<i>Akune Meat Distribution Center</i>
<i>Processed</i>	<i>Jun,15,2018</i>	<i>Kagoshima</i>	<i>Akune</i>	<i>Akune Meat Distribution Center</i>
<i>Shipped</i>	<i>Jun,26,2018</i>	<i>Mexico</i>	<i>Mexico city</i>	<i>Wagyu Tesoro de Japon</i>

Certified Wagyu



A5 Tenderloin xxx style

xxx Mxn

Our signature menu

The tenderest cut of all, King of the steak

highly recommend to be served

Rare to medium rare

Notice

Thank you very much for choosing xxx today.

We would like our customer to enjoy our wagyu in the best condition as possible.

We directly import all the 100% certified Japanese Black wagyu from Kagoshima Japan

Completely fresh by air without any frozen process

Please ask our staff the next shipment when sold out